

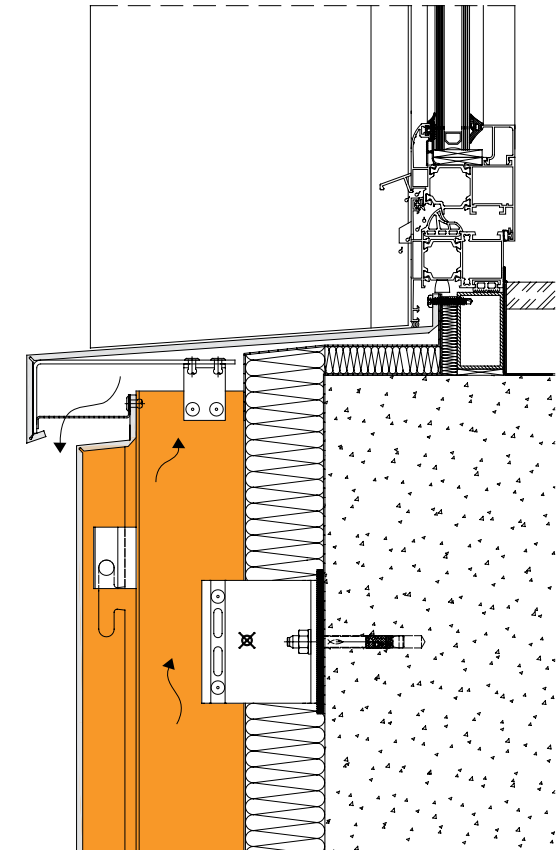


VARIO

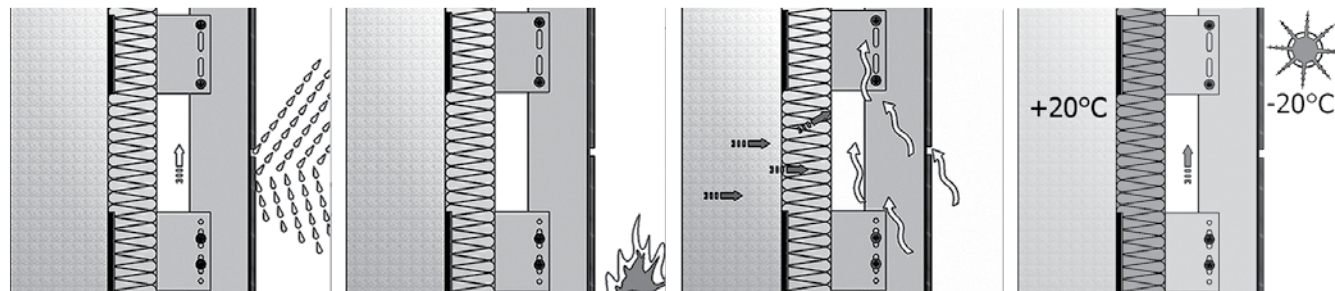
SISTEM DE
FATADA
VENTILATA

SISTEMELE VENTILATE ETEM SUNT PRELUCRATE IN SCOPUL UNEI FIXARI SIGURE PE STRUCTURA CLADIRII A DIFERITELOR MATERIALE DE FATADA

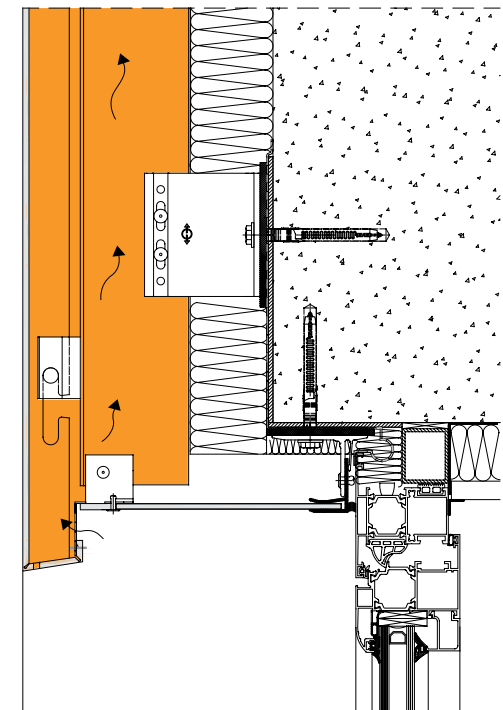
Principiile de baza la proiectarea sistemului Vario sunt: o miscare libera a elementelor in functie de coeficientul de dilatare, preluarea solicitarilor dinamice si garantarea stratului de aer de 4 cm – 8 cm intre materialul de fatada si termoizolatie, pentru obtinerea unui efect optim. Elementele de baza ale sistemului sunt prelucrate in urma unei simulari prealabile a solicitarilor maxime, stabilindu-se o forma optima care sa atribuie o siguranta crescuta constructiei.



AVANTAJELE SISTEMELOR DE FATADE VENTILATE

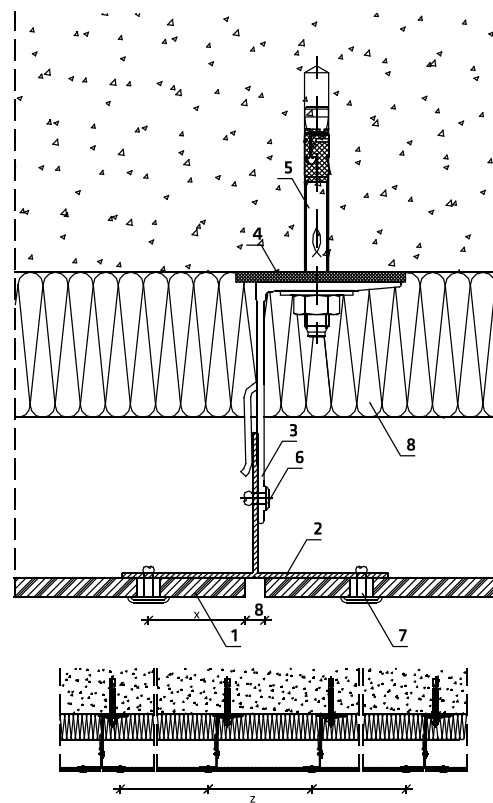


- Economisirea de energie si eficacitate energetica
- Rezistenta la incendii
- Ventilare naturala si impermeabilitatea apei
- Izolarea zgomotului
- Montaj rapid si exploatare usoara
- O viziune excelenta

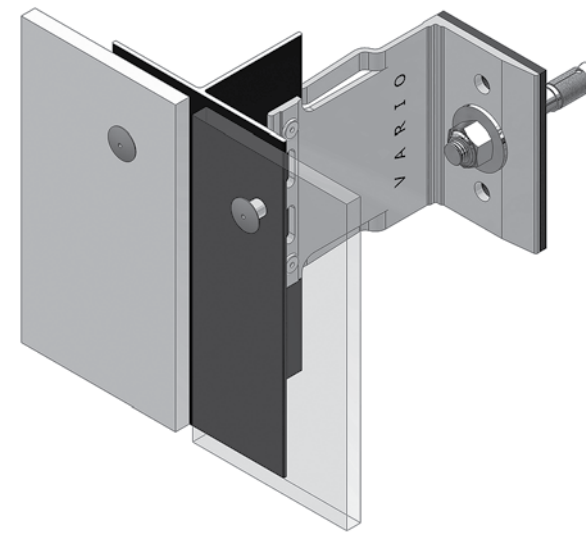


SISTEM DE FATADA VENTILATA VARIO PENTRU MONTAREA DE FIBROCIMENT, CERAMICA USOARA, HPL SI AQUAPANEL

Sistemul Vario se bazeaza pe principiul cel mai reusit de nivelare si montare a materialelor de fatada. Modul universal permite executarea de orice fel de captuseala, prin combinarea de console de montaj resort cu profilele de baza. Accesoriile special prelucrate efectueaza legatura dintre diferitele materialele de fatada si subconstructie.



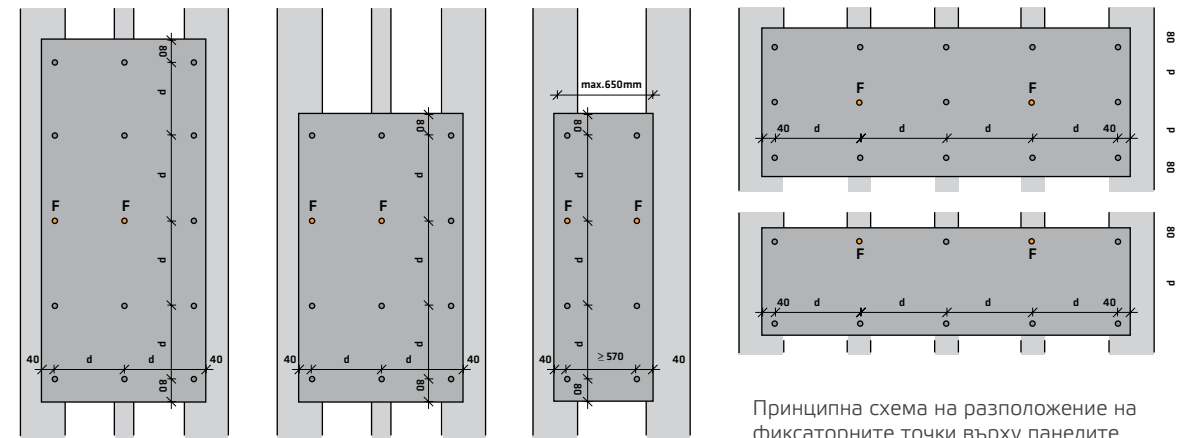
1. fibrociment, panouri HPL si aqua-panel
2. profil de baza
3. consola de montaj, 100 mm,
4. tampon termoizolant
5. diblu,
6. pop-nit 4.8x12.7
7. pop-nit 4.0x18.8
8. izolatie termica



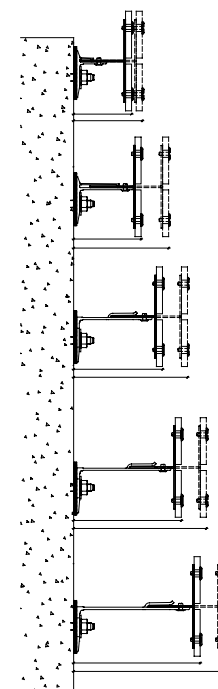
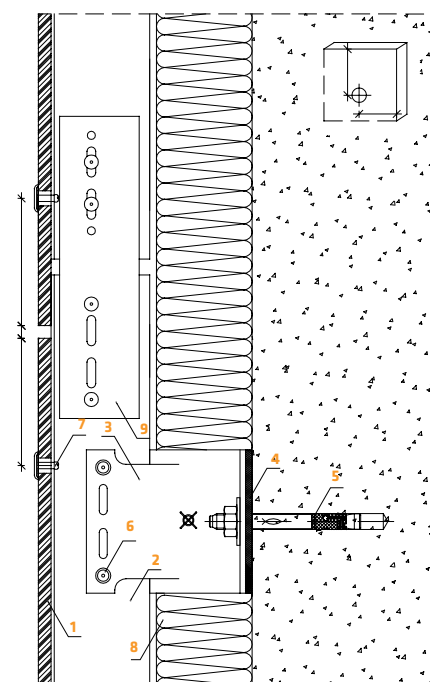
Fixarea materialului pe structura cladirii necesita alegerea atenta deelemente de sprijin, mobile si fixe. Numarul acestora se defineste de specificul materialului si de prescrierea producatorului.

Cerintele referitoare la subconstructie, depind de cerintele si prescrierile producatorului materialului de fatada.

Producatorul recomanda instrumentele care se folosesc la taierea si perforarea panourilor.



Принципна схема на разположение на фиксаторните точки върху панелите



07vario07
L max - L min=14mm

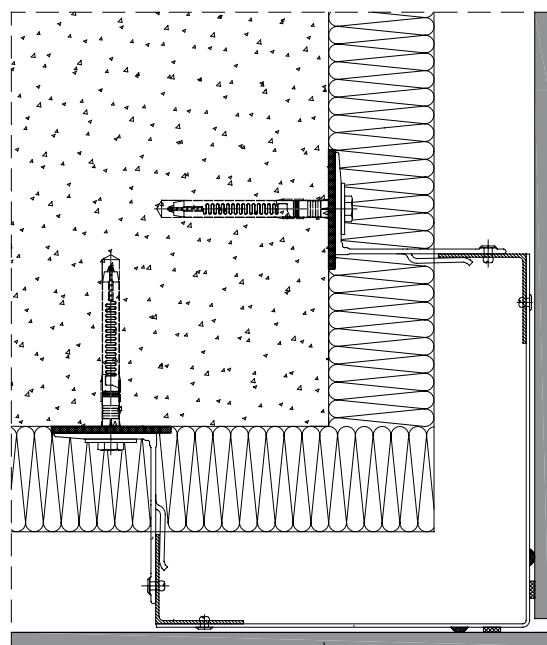
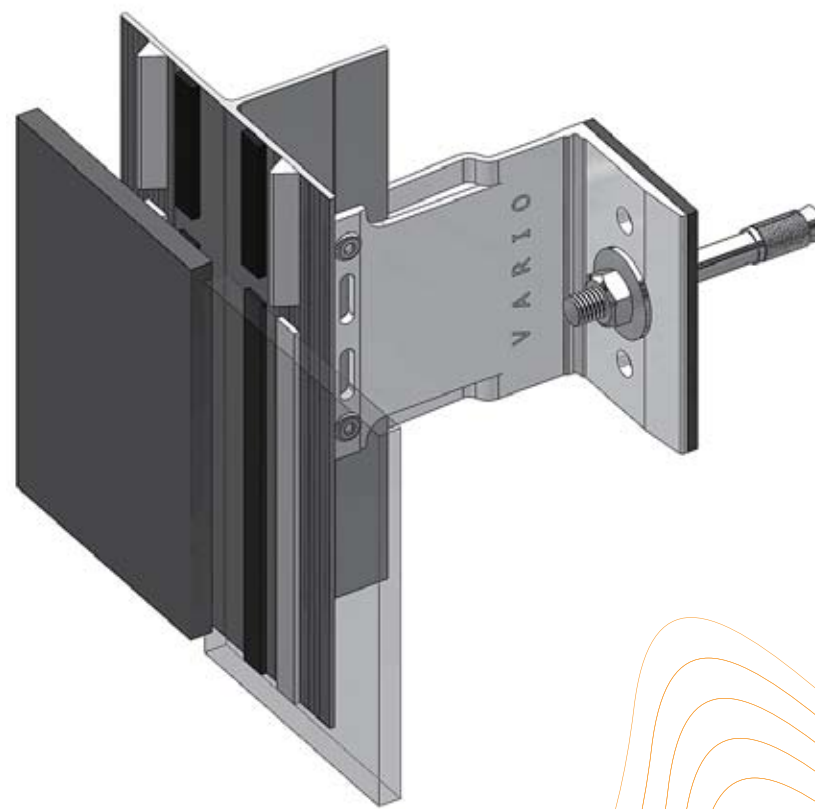
07vario08
L max - L min=37mm

07varioQ10
L max - L min=33mm

07varioQ17
L max - L min=33mm

07varioQ15
L max - L min=33mm

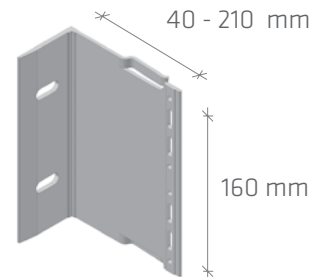
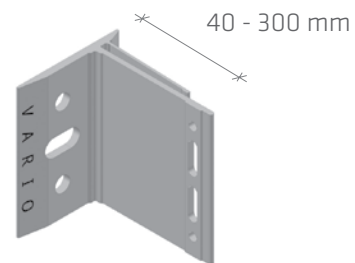
ETEM Building Systems recomanda SikaTack® - Panel pentru montajul ascuns a materialelor de fatada usoare. Produsul este compus din adeziv cu o elasticitate de lunga durata, garantata de producator si o banda adeziva de ambele parti, care trebuie sa fixeze cel putin 12 ore panoul, pana cand adezivul patrunde in stratul de suprafata al acestuia. De o importanta primordiala pentru obtinerea unor rezultate optime, este prelucrarea prealabila a profilelor de baza si a suprafetei inferioare a materialului de fatada cu produsele Sika Cleaner 205 si SikaTack® - Panel Primer.



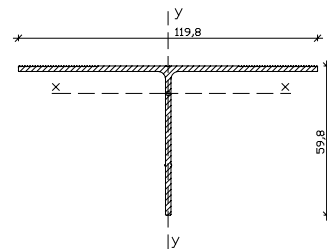
PROFILE SI ACCESORII

Sistemul dispune de profile de finisare si accesorii speciale, care permit executarea de detalii unice, finisari si legaturi cu alte materiale de fatada.

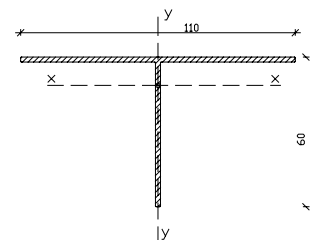
console de montaj



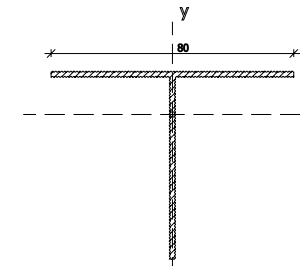
profil de baza



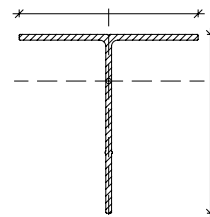
код: 33633
размер: 120 x 60 x 2.2 mm



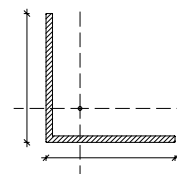
код: 33548
размер: 110 x 60 x 2 mm



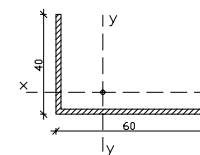
код: 14222
размер: 80 x 62 x 2 mm



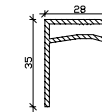
код: 33570
размер: 59 x 59 x 1.9 mm



код: 4218
размер: 60 x 60 x 2 mm



код: 10645
размер: 60 x 40 x 2 mm



31064

accesorii



07bwm545



07bwm548



07shina



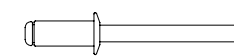
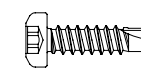
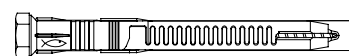
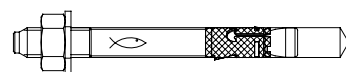
07pvcbreak00



07washerQ10

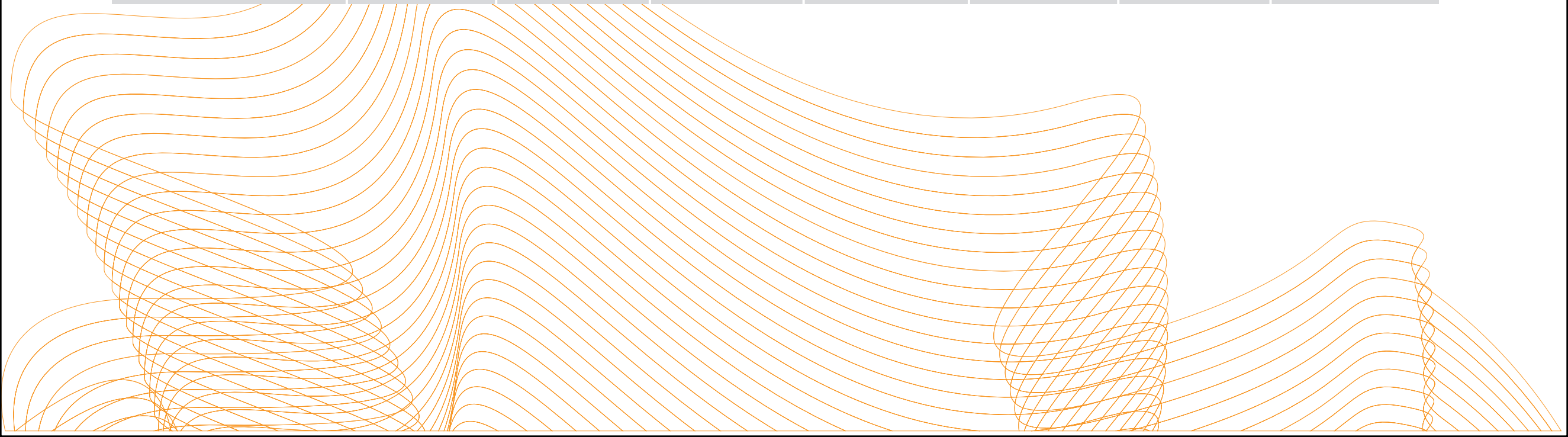
cod

element de fixare



PROFILE SI ACCESORII

consola	lungime L (mm)	solicitarea de la greutatea construcției		solicitarea dorata vantului - suctiune		solicitarea datorata vantului - presiune	
		kN	kg	kN	kg	kN	kg
07 vario 07	40	1,48	148	0,945	94,5	0,945	94,5
07 vario 08	75	1,045	104,5	0,945	94,5	0,945	94,5
07 vario Q10	100	1	100	0,945	94,5	0,945	94,5
07 vario Q17	125	0,5	50	0,945	94,5	0,945	94,5
07 vario Q15	150	0,6	60	0,945	94,5	0,945	94,5
07 bravo 01	65	0,6	60	0,945	94,5	0,945	94,5
forte 71121	105	3	300	3,5	350	≥3,5	350
07 vario Q18	180						
07 vario Q21	210						



OFFICE

ETEM BUILDING SYSTEMS ROMANIA

Prelungirea Soselei Giurgiului, Nr. 33A, Com. Jilava

T: +40 21 209 09 70

F: +40 21 209 09 73

contact@etem.ro

www.madeinetem.com/ro

